



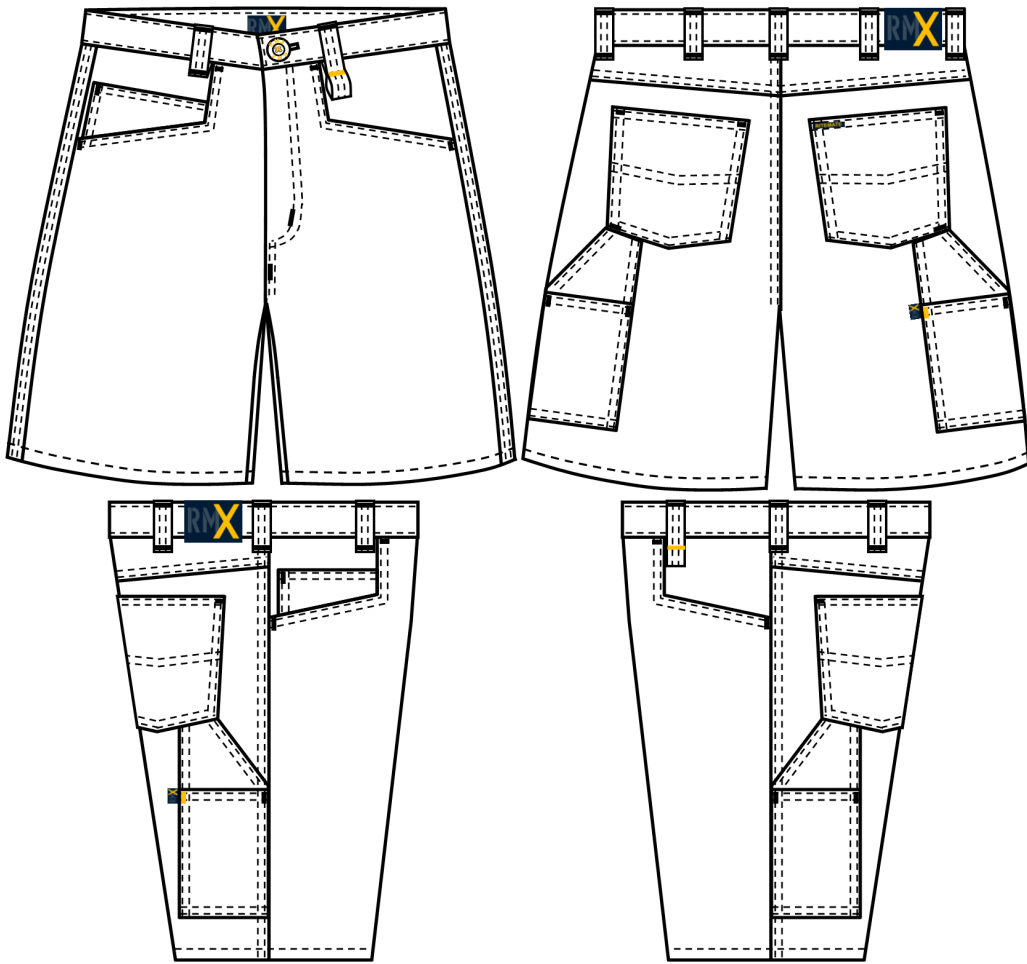
**PILBARA
COLLECTION**
by RITEMATE AUSTRALIA

RMX

RMX Bottom

RMX001S RMX Flexible Fit Mid Leg Stretch Utility Short

COMMERCIAL IN CONFIDENCE



**UPF
50+**

Features

- New Generation, Flexible Fit Styling
- Left and Right Hand Utility Pockets
- Glove Clip at Front Left Belt Loop
- Firm-Fit, Secure Phone Pocket
- Garment Washed with Peached Finish for Supreme Comfort
- Superior Garment Assembly, Bar-tacks and Twin Needle Stitching for Extra Strength
- Quality YKK Zippers
- UPF50+ Meets Australian Standard AS/NZS 4399:1996

Fabric

Cotton Stretch (2%) Twill, 300gsm

Colour

Black Dark Navy Tan

Tape Configuration

Nil

Hi Visibility Application

Day time

Night time

Size Range

Men's Size

72R – 112R

87S – 127S

79L – 94L

Ladies Size

8 - 24



Black

Tan

Dark Navy

Fabric Quality

Dimension Stability		+/-3%
Colour Fastness to Washing	Colour Change	4
	Colour Staining	4-5
Colour Fastness to Rubbing	Dry	3-4
	Wet	2-3
Colour Fastness to Light		4-5
Tearing Strength	Warp	>=25 min N
	Weft	>=21 min N
UPF (AS/NZS 4399:2017)		50+

Measurement Table

Ladies Size	8	10	12	14	16	18	20	22	24				
Men's Size	72	77	82	87	92	97	102	107	112	117	122	127	
1/2 Waist	36.5	39	41.5	44	46.5	49	51.5	54	43.5	46	48.5	51	
1/2 Hip	88	93	98	103	108	113	118	123	128	133	88	93	
Inseam	23	23	23	23	23	23	23	23	23	23	23	23	
Outleg	46	47	48	49	50	51	52	53	54	55	46	47	
1/2 Leg Opening	23	24	25	26	26.5	27.5	28.5	29.5	30.5	31.5	33	34	

